



**BLUE STONE GAS AND POWER
LIMITED**

BLUE STONE GAS & POWER LIMITED

OUR CORPORATE PROFILE

FUELING FOR CLEANER LIVING, EVERY DAY



TABLE OF CONTENT

ABOUT THE COMPANY

OUR VISION & MISSION

MD WELCOME NOTES

OUR CORE VALUES

OUR STRATEGIC OBJECTIVES

OUR STRATEGIC FOCUS AREAS

OUR TEAM

SWOT ANALYSIS

OUR PLANNED MILESTONES

NIGERIA MARKET REVIEWS

**CORPORATE GOVERNANCE
STRATEGY & STRUCTURE**

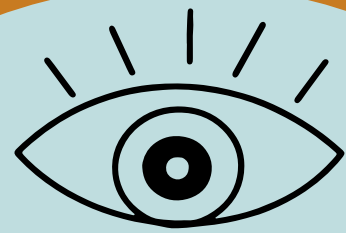
DO CONNECT WITH US



ABOUT THE COMPANY

Blue Stone Gas and Power Limited is an emergent leader in the African energy sector, focusing on the development and management of extensive natural gas resources. As a company headquartered in Nigeria—the country with the highest gas reserves in Africa and ranked ninth globally—Blue Stone is strategically positioned to harness these resources to foster regional energy security and sustainability. With aspirations to expand its influence across Africa and eventually globally, Blue Stone is committed to shaping the future of clean energy with a foundation built on sustainability and integrity.

OUR VISION & MISSION



Vision

Blue Stone Gas and Power Limited envisions becoming a pivotal force in the global energy landscape by leading the development, aggregation, and distribution of natural gas and its derivatives across Africa and beyond.

OUR AIM IS TO DELIVER CLEAN, EFFICIENT, AND SUSTAINABLE ENERGY SOLUTIONS THAT SUPPORT NOT ONLY ECONOMIC GROWTH BUT ALSO ENVIRONMENTAL STEWARDSHIP.



Mission

Our mission is to efficiently develop and manage natural gas resources, utilizing innovative technologies and sustainable practices to provide reliable and clean energy.

WE ARE DEDICATED TO MAINTAINING THE HIGHEST STANDARDS OF INTEGRITY AND ENVIRONMENTAL ETHICS, ENSURING THAT OUR OPERATIONS AND PRODUCTS CONSISTENTLY CONTRIBUTE TO A GREENER PLANET.

Dear Stakeholders,

I am excited to share our vision for a sustainable future powered by cleaner energy. With a firm commitment to innovation and environmental stewardship, we are uniquely positioned to leverage Africa's rich natural gas resources to meet the growing global demand for sustainable energy solutions.

We understand the responsibilities that come with our products and services offerings, and we are committed to upholding the highest standards of integrity and transparency in all our operations.

Our strategic initiatives are designed not only to drive growth but also to ensure a positive impact on both local communities and the global environment.

Thank you for your support and trust in us. Together, we are setting the foundation for a cleaner, more sustainable future.

Engr. Etim Inyang (Jnr.)
(Managing Director)



FUELING FOR CLEANER LIVING, EVERY DAY

OUR CORE VALUES

Sustainability

Committing to long-term ecological balance through innovative, clean energy solutions.

Innovation

Pioneering advancements in technology and processes to enhance the natural gas industry.

Collaboration

Fostering strong relationships with partners, communities, and governments to achieve mutual goals.

Integrity

Operating with the highest standards of ethics and transparency.

Safety

Prioritizing the safety of our operations and workforce at every stage.

OUR STRATEGIC OBJECTIVES

SUSTAINABLE GAS FIELD DEVELOPMENT

The company will actively engage in sustainable practices in gas field development by using environmentally friendly drilling technologies and methods that minimize ecological disruption.

INVESTMENT IN CNG & LNG TECHNOLOGIES

By focusing on Compressed Natural Gas (CNG) and Liquefied Natural Gas (LNG) developments, Blue Stone provides cleaner energy alternatives to traditional fuels such as coal and oil.

GAS AGGREGATION & TRANSPORTATION

Blue Stone will ensure that its gas aggregation and transportation methods are efficient and environmentally sound. This will include maintaining pipelines to prevent leaks and using advanced logistics and routing software.

COMMUNITY ENGAGEMENT & EDUCATION + RESEARCH & DEVELOPMENT

The company will actively engage with local communities to educate them about the benefits of clean energy and how it contributes to healthier living.

COMPLIANCE WITH ENVIRONMENTAL REGULATIONS

Blue Stone adheres strictly to local and international environmental regulations and guidelines. The company commits to continuous monitoring and evaluation of its environmental impact.

OUR STRATEGIC FOCUS AREAS

Gas Field Development

Exploring and developing gas fields using advanced, sustainable technologies to maximize production efficiency.

LNG Development

Expanding capabilities in LNG to facilitate storage & global transportation, enabling international trade & access to clean energy.

Gas Transportation

Building and maintaining a safe, efficient transportation network to deliver natural gas and its derivatives securely across diverse markets.

Gas Aggregation

Consolidating gas production from various sources to create robust supply chains and improve market responsiveness.

CNG Development

Enhancing the development of CNG infrastructure to provide cleaner fuel alternatives for transportation and industry.

RESEARCH AND DEVELOPMENT

Innovation is at the core of Blue Stone Gas and Power Limited. Our R&D initiatives are focused on advancing the efficiency of gas extraction and processing, improving LNG and CNG technologies, and developing renewable energy sources to complement our natural gas operations. These efforts are crucial for adapting to the evolving energy demands and environmental standards.

ENVIRONMENTAL & CORPORATE RESPONSIBILITY

Aligned with our core value of sustainability, we are committed to reducing our environmental impact and enhancing the communities in which we operate. Our projects are designed to comply with international environmental standards, emphasizing the protection of ecosystems and biodiversity. Community engagement programs and initiatives aimed at improving local livelihoods are integral to our business philosophy.

GLOBAL AND REGIONAL IMPACT

With a base in Nigeria and eyes on the entire African continent, Blue Stone Gas and Power Limited is ideally located to leverage the vast natural gas reserves of Africa to meet both regional and global energy demands. Our long-term strategy involves scaling our operations and extending our reach to international markets, promoting wider access to clean and sustainable energy.

Etim Inyang (Jnr.) **(Managing Director)**

Etim is a Civil Engineering graduate of the Obafemi Awolowo University, Ile-ife. He has With over twenty-five years of project management and general management experience Etim Inyang (Jnr) currently serves in the Board of a number of companies spanning oil and gas, renewable energy and real estate development..

Otamere Elegon **(Chief Strategy Officer)**

Otamere served as the Group Chief Strategy Officer of Primewaterview Holdings. He is a Financial and Management executive with over 30 years experience in Strategy & Policy Formulation & Execution Business Analysis, and Marketing..

OUR TEAM

Oyedeji Afolabi **(Executive Director)**

Oyedeji is a Quantity Surveyor by profession spanning over 30 years in the construction/real estate industry. He is the Group MD of Panazone Group which is involve in Real Estate Development, Hospitality and Consulting. He is also the MD of Allegiance CNG Limited and a board member of Ire Clay Product Company Limited.

Shwarji Goshit **(Company Secretary)**

Shwarji has been very active in diverse areas of law practice in the past ten years. He has been constant in the practice of law and has wide experience in the areas of real estate, property law, cybercrimes, telecommunications law, ICT law, corporate law and practices, oil and gas law especially Compressed Natural Gas (CNG).

SWOT ANALYSIS

STRENGTHS

1. Strategic Location
2. Focus on Clean Energy
3. Innovative Technology
4. Expert Management Team
5. Compliance and Safety Focus

WEAKNESSES

1. New Market Entrant
2. Capital Requirements
3. Scalability Challenges
4. Dependency on Regional Stability



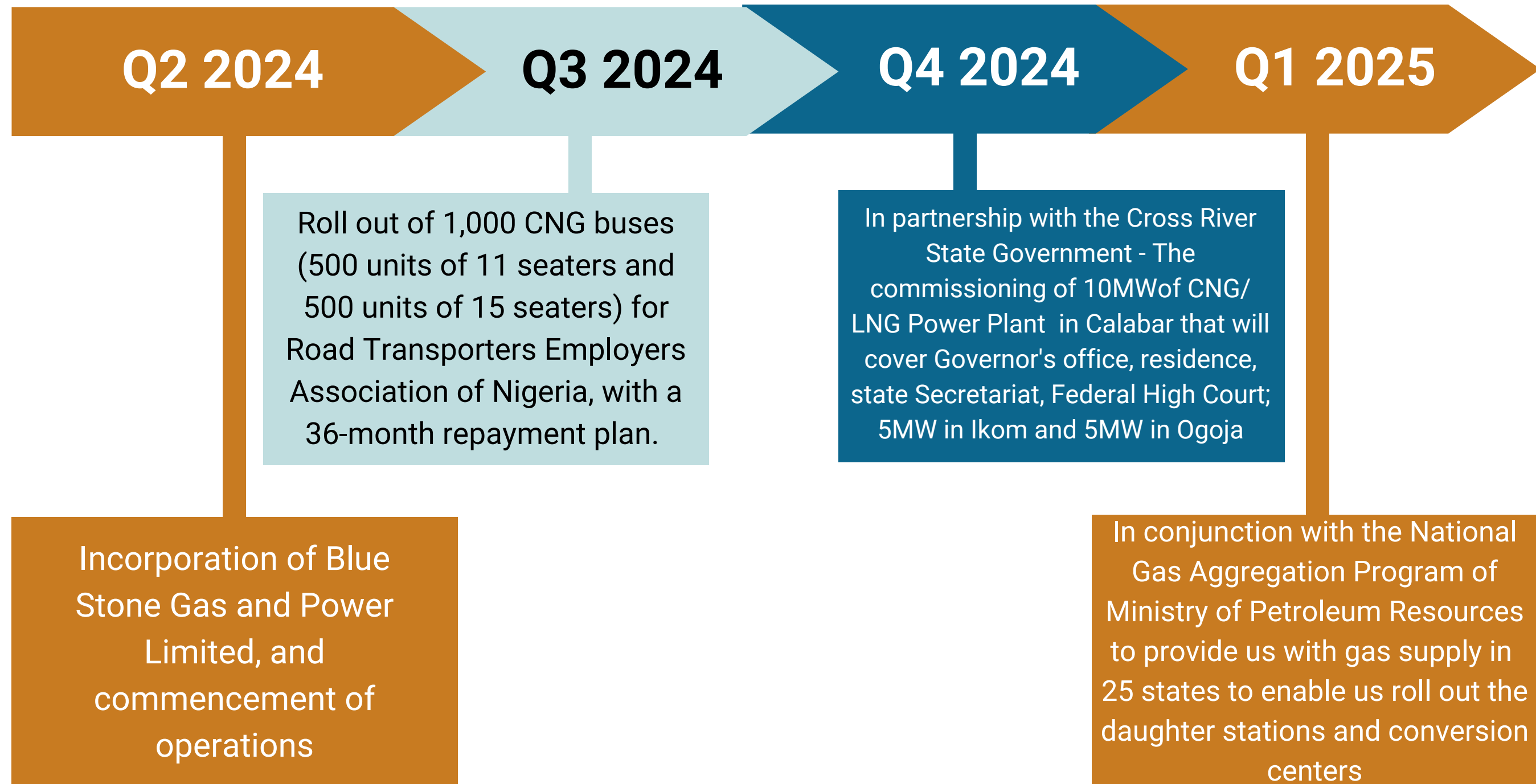
OPPORTUNITIES

1. Growing Demand for Clean Energy
2. Potential Partnerships
3. Innovation in Energy Technology
4. Expansion into New Markets

THREATS

1. Competition
2. Regulatory Changes
3. Market Volatility
4. Technological Disruption

OUR PLANNED MILESTONES



NIGERIA MARKET REVIEW

300%+

Increase in PMS
due to **Subsidy
Removal**

150,000
premature
deaths annually
due to **Air
Pollution**

Nigeria's CO2
Emission in
2021 was 136.9
Million Metric
Tonne

2022 – N4.39
Trillion fuel
subsidy in
2022 - **Reuters**

22%
Inflation rate as
at Quarter 2
2023

17.2%
Consumer
price **inflation** due
to high cost

Insufficient
CNG
infrastructure
across Nigeria

Lack of
awareness and
knowledge about
the benefits and
availability of CNG

Scarcity of
adequately trained
local technicians
proficient in CNG
technology

CORPORATE GOVERNANCE STRATEGY AND STRUCTURE

The corporate governance structure of Blue Stone Gas and Power Limited is designed to uphold the highest standards of integrity and accountability, ensuring that the company operates transparently, responsibly, and effectively in achieving its strategic goals.

Governance Strategy: Blue Stone Gas and Power Limited adopts a governance strategy that emphasizes transparency, ethical conduct, and compliance with legal and regulatory requirements. Our approach is rooted in international best practices and tailored to address the complexities and risks of the energy sector, particularly in gas and power.



1. Stakeholder Engagement:
2. Ethics and Compliance
3. Risk Management

Governance Structure:

- **Board of Directors:** With the support of the following committees - Audit, Remuneration, Nomination, Risk and Compliance, & Sustainability
- **Executive Management**

Transparency and Reporting:

- We will regularly publish detailed financial and operational reports to keep stakeholders informed about the company's performance and governance practices.
- We will release our annual reports, sustainability reports, and disclosures as per market and regulatory requirements to ensure transparency and build trust.

Do Connect With Us!



+234 802 313 5473
+234 808 630 2724



admin@bluestonelimited.com
<https://bluestonelimited.com/>



Plot 902a Gbolahan Owolabi
Close, Omole Phase One
GRA Extension, Ojodu, Lagos

Thank You

We look forward to working with you

